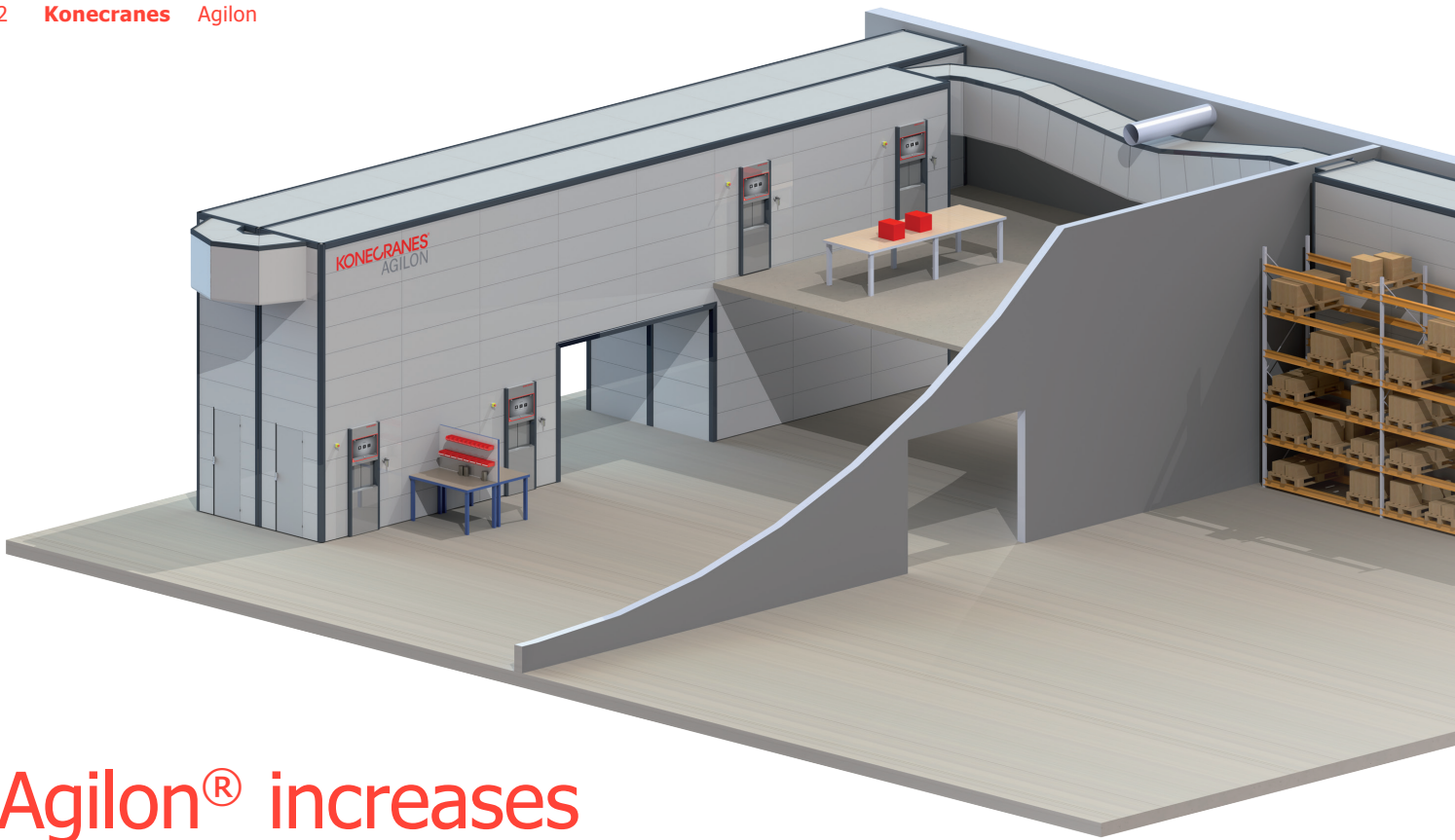


AGILON®

Entering the ERA of the industrial internet





Agilon® increases production efficiency

Productivity and efficiency are key to the operations of any modern production plant. Time is money and it can be spent in more effective ways than searching for and transporting parts, part assemblies or tools. An optimal production line occupies little space and internal logistics function smoothly.

The right parts in the right place at the right time

Now you can concentrate on what you do best. Instead of using people and forklift trucks, parts, part assemblies and

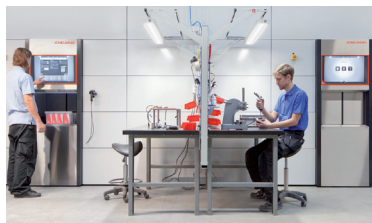
finished products move through the factory automatically via a transportation tube, and finally, to dispatch.

Agilon handles picking, registers every transaction and ensures that your production warehouse contains enough materials for all work phases. When the system moves parts and tools, you save time and your production process becomes more efficient. The data generated by Agilon allows you to develop better quality and more diverse procurement and operations than ever before.

Agilon is designed to increase the productivity of assembly lines



Incoming items are received directly by Agilon and data transferred to the enterprise resource planning system.



Agilon displays your work queue and brings the required parts and tools to users quickly.



Finished products transfer inside Agilon directly to dispatch. Time to completion – from assembly to order delivery – will become shorter.



AGILON BRINGS ADDED VALUE TO MATERIALS MANAGEMENT

- Warehousing of production parts
- Production assembly
- Parts warehousing
- Maintenance warehouse
- Maintenance, repair and operations warehouse (MRO)
- Internal logistics
- 24/7 trade

An up-to-date maintenance warehouse with 24/7 service

A maintenance warehouse serves a large maintenance team with specialist tools, spare parts and materials. These may even be needed at night or on weekends. With round-the-clock shiftwork, an urgent need can arise at any time. In such situations, the challenge is to ensure that your warehouse stays in order, items are available and information is up-to-date.

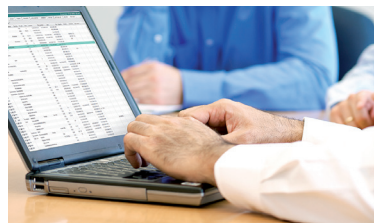
Improve your operational efficiency and service

The Agilon system makes it easy to find anything stored in your warehouse, even for occasional users. A photograph of every item makes it much faster to find the right one. Monitoring becomes simple – Agilon shows you who took what, when, how much, for which job and from which batch. With warehouse stocks always up-to-date, continuous inventory makes your operations more efficient, and laborious seasonal inventories are eliminated. You can find out what items are used for and whether loaned items have been returned. You can also track individual parts. All of this information is available 24/7.

Agilon makes inventory simple – you will save time and money



Users collect items from the Agilon access point. They can simultaneously check the number of remaining items and confirm they did a check.



The system stores the transaction and allows full monitoring of inventory levels.



If necessary, retrieve packages from Agilon to check the item balance.

Free up time from materials management for more productive tasks



Monitor availability and consumption

When managing a warehouse, it is essential that the supplies stored there are available and that the procurement process is efficient. In addition, full real-time supply monitoring reduces consumption and saves money.

The Agilon materials management system is so smart, it ensures that your supply warehouse always contains

what is required and that stocks do not run out. Agilon makes the procurement process more efficient by placing additional orders automatically and offering better usage data to support procurement. The system allows consumption to be monitored by job number and department, and even by user. Agilon lays the foundation for cost-efficient management of the delivery chain.

AGILON ROBOT

- One or more robots travelling within the shelving
- Takes care of picking and delivering components to the user

ADJUSTABLE SHELF CONSTRUCTION

Height of the shelves 10–45 cm

STORE COMPONENTS IN THEIR ORIGINAL PACKAGING

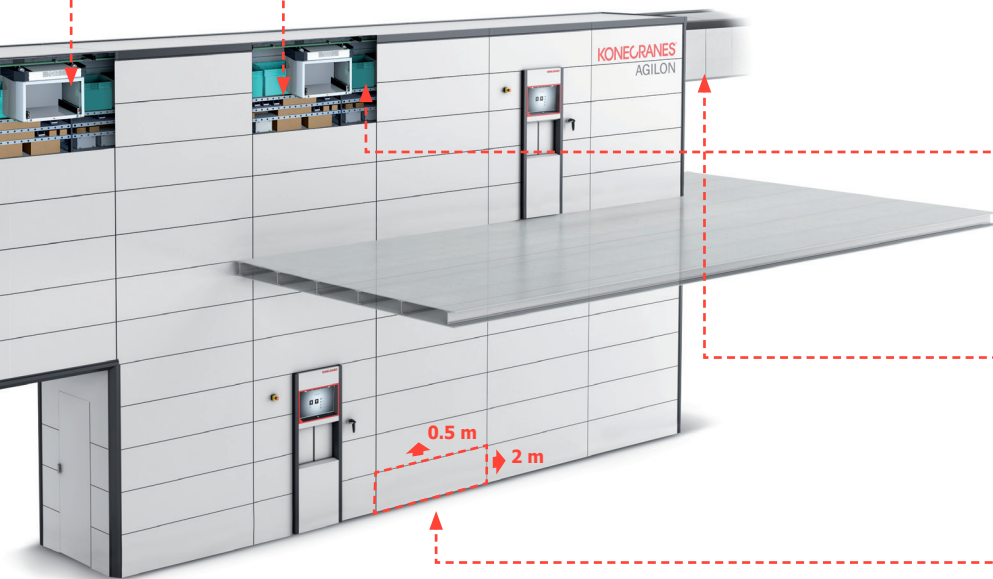
- Package sizes (width x depth x height):**
- Minimum: 3 x 3 x 3 cm and weight 50 g
 - Maximum: 60 x 40 x 45 cm and weight 25 kg

TRANSPORTATION TUBE

Parts of the Agilon can be connected using transportation tubes.

ADAPTABLE TO DIFFERENT PREMISES AND PROCESSES

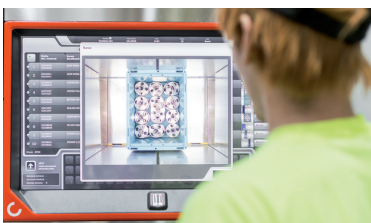
- Module size: 200 cm x 50 cm (width x height)



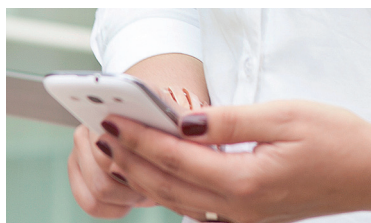
AGILON TOOL PANEL

- Module size: 200 cm x 50 cm (width x height)
- Maximum weight of tools: 40 kg / panel
- Keeps required tools easily available

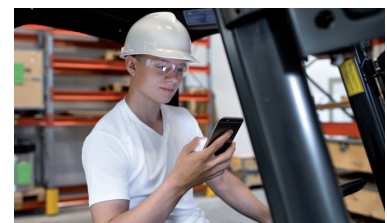
Agilon manages parts and their records



Agilon monitors the volume of components in your warehouse and reacts when the number reaches pre-defined thresholds.



The Agilon system automatically sends email reminders to the purchaser or additional orders directly to suppliers.



When parts arrive, Agilon updates the number of those parts and acknowledges receipt of the order.

Adaptable, adjustable Agilon

Every Agilon solution is designed to suit the specific needs and objectives of each customer. Thanks to its modular structure, the physical Agilon system can be adapted and expanded at any time after installation. The size and number of access points can change as your materials management needs change. Agilon does not require significant initial capital or large-scale investment to set up – just a monthly fee brings it to your warehouse.

A full-service materials management solution at your service quickly

It's easy to get started, as the system requires only a suitable premises, an internet connection and an earthed electrical socket. Konecranes handles the rest. You get the Agilon solution that suits your facility, a number of items and use case. Benefit from design services, installation support services and the option to connect Agilon to other enterprise resource planning solutions. Software updates and module maintenance ensure that your Agilon system remains up to date. Konecranes always uses customers' ideas in product development.

Agilon changes as your needs change



Konecranes helps you to design production and warehouse layouts using a wide range of options possible with Agilon.



The Agilon system can be expanded when your operations change.



Remote monitoring ensures that your service functions correctly.

THE AGILON SERVICE CHARGE INCLUDES THE FOLLOWING:

- Agilon system and software
- User training
- Maintenance
- Repairs
- Remote monitoring and support

Agilon brings the industrial internet to materials management

Agilon compiles, processes and updates the data on all warehouse transactions automatically so your time will not be wasted making manual entries or completing paperwork. Your operational monitoring will be up-to-date and cost efficient – regardless of who uses the access point. Konecranes service personnel actively monitor the system and can react quickly to faults. Well-timed and planned maintenance minimises service outages.



Agilon Mobile speeds up your daily materials management and connects you to information about the contents of your warehouse, wherever you may be. It can also be used as a stand-alone solution for managing warehouse transactions and materials.

International awards and distinctions for the Agilon



reddot award 2014
winner



PLOOTU FENNICA
ohutlevytuotekilpailu



VUODEN
LAATUINNOVAATIO
2014

FENNIAPRIZE 14
HONORARY MENTION



Konecranes is a world-leading group of Lifting Businesses™, serving a broad range of customers, including manufacturing and process industries, shipyards, ports and terminals. Konecranes provides productivity enhancing lifting solutions as well as services for lifting equipment of all makes. In 2018, Group sales totaled EUR 3.16 billion. The Group has 16,100 employees at 600 locations in 50 countries. Konecranes shares are listed on the Nasdaq Helsinki (symbol: KCR).

© 2020 Konecranes. All rights reserved. 'Konecranes', 'Lifting Businesses' and  are either registered trademarks or trademarks of Konecranes.

This publication is for general informational purposes only. Konecranes reserves the right at any time, without notice, to alter or discontinue the products and/or specifications referenced herein. This publication creates no warranty on the part of Konecranes, express or implied, including but not limited to any implied warranty or merchantability or fitness for a particular purpose.



Scan the QR code and take a look at the Agilon video material and our customers' experiences

bit.ly/AGILON